

# MOTORI OLEODINAMICI AD INGRANAGGI

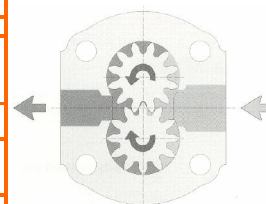
## HYDRAULIC GEAR MOTORS



http://www.gmppumps.com  
E-mail: info@gmppumps.com

I motori della serie PLM sono composti essenzialmente da un corpo in lega di alluminio e da una coppia di ruote dentate supportate da cuscinetti a strisciamento, il tutto chiuso da una flangia d'attacco anteriore e un coperchio posteriore in ghisa o in alluminio dalle ottime caratteristiche meccaniche.

PLM motors are basically composed of a gear housing in aluminium alloy, two gear wheels supported by sleevebearings and two end plates, the front and rear cover, either in aluminium or in cast iron with excellent mechanical characteristics.



### PARAMETRI DI FUNZIONAMENTO – GENERAL DATA MOTORS

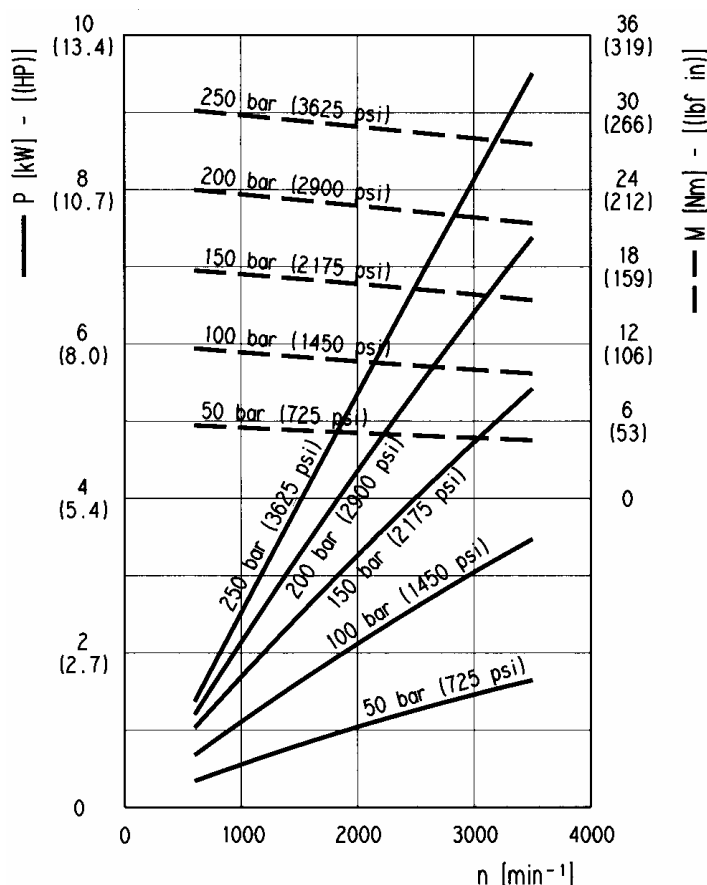
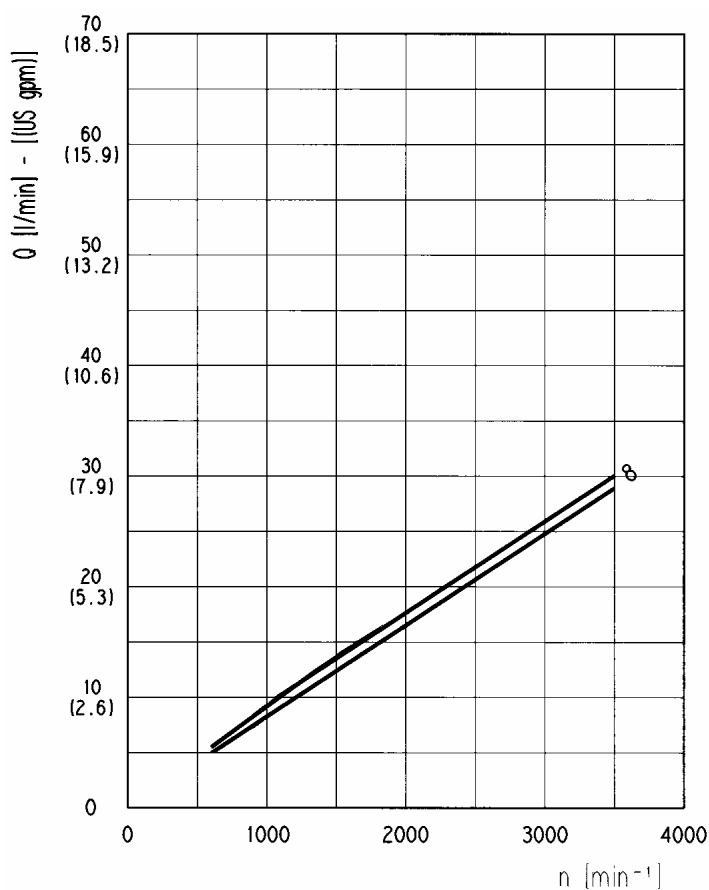
| Motore tipo<br>Motor type | Cilindrata<br>Displacement<br>cm <sup>3</sup> /giro_cm <sup>3</sup> /rev | Pressione max. – Max. pressure |                |                | Velocità max.<br>Max. speed | Velocità min.<br>Min. speed |
|---------------------------|--|--------------------------------|----------------|----------------|-----------------------------|-----------------------------|
|                           |  | p <sub>1</sub>                 | p <sub>2</sub> | p <sub>3</sub> |                             |                             |
|                           |  | bar (psi)                      |                |                | min <sup>-1</sup>           |                             |
| <b>PLM 20.8</b>           | 8,26   | 250 (3626)                     | 280 (4061)     | 300 (4351)     | 3500                        | 600                         |

p<sub>1</sub>= Pressione max. continua  
p<sub>1</sub>= Max. continuous pressure

p<sub>2</sub>= Pressione max. intermittente  
p<sub>2</sub>= Max. intermittent pressure

p<sub>3</sub>= Pressione max. di punta  
p<sub>3</sub>= Max. peak pressure

### CURVE CARATTERISTICHE MOTORI PLM – GEAR MOTORS PERFORMANCE CURVES



Le curve sono state ottenute alla temperatura di 50°C, utilizzando olio con viscosità 36 mm<sup>2</sup>/s a 40°C e alle pressioni sotto riportate.

PLM 20.8 \_\_\_\_\_ 20-250 bar

Each curve has been obtained at 122 °F (50°C), using oil with viscosity 168 SSU (36 cSt) at 104 °F (40°C) and at these pressures.

PLM 20.8 \_\_\_\_\_ 290-3626 psi (20-240 bar)

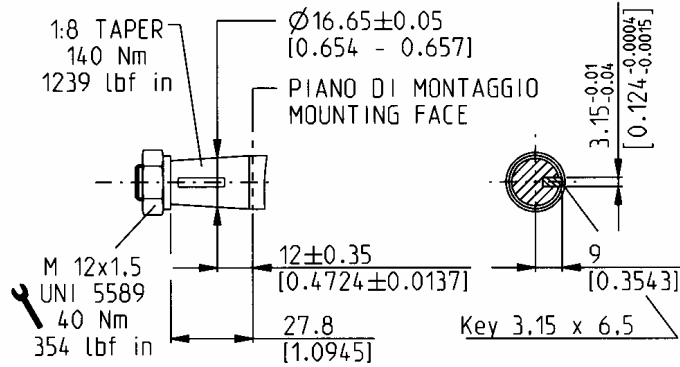


http://www.gmppumps.com  
E-mail: info@gmppumps.com

# MOTORI OLEODINAMICI AD INGRANAGGI HYDRAULIC GEAR MOTORS

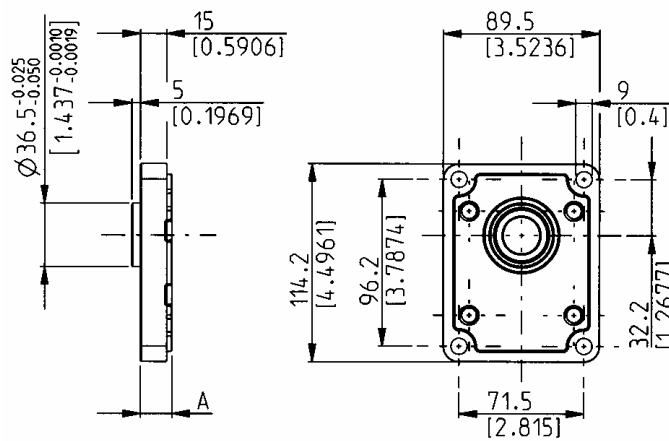
## ESTREMITA' ALBERO DI TRASCINAMENTO - DRIVE SHAFT

EUROPEO CONICO 1:8 - EUROPEAN TAPERED 1:8



## FLANGIE DI MONTAGGIO - MOUNTING FLANGES

EUROPEA\_E2 - EUROPEAN\_E2



## DIMENSIONI - DIMENSIONS

